

**Call to  
view  
Model**



Presented By ■ Crescent Homes

*Featuring*

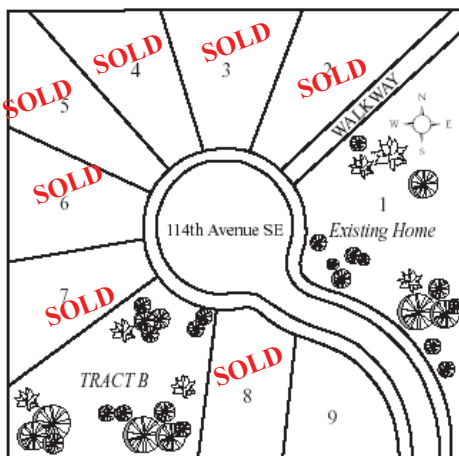
Beautiful 4 or 5 bedroom homes, some with Den or Bonus Room • Large Homesites  
2,550 -3,006 square foot homes, many with views of Mount Rainier and the Cascade Range  
Two & Three Car Garages • Elegant Hardwood Floors • Five Piece Master Bath  
And many plush standard features...



Homesite	Model	Features	Sq. Ft.	Status	Price
2	Cypress	5 BR • Bonus or Den + 3 Full Bath & 2 Car Garage	3006	<b>SOLD</b>	<b>SOLD</b>
3	Cypress	5 BR • Bonus or Den + 3 Full Bath & 3 Car Garage	3006	<b>SOLD</b>	<b>SOLD</b>
4	Monterey	4 BR • Bonus or Den + 3 Full Bath & 2 Car Garage	2550	<b>SOLD</b>	<b>SOLD</b>
5	Cypress	5 BR • Bonus or Den + 3 Full Bath & 2 Car Garage	3006	<b>SOLD</b>	<b>SOLD</b>
6	Cypress	5 BR • Bonus or Den + 3 Full Bath & 3 Car Garage	3006	<b>SOLD</b>	<b>SOLD</b>
7	Monterey	4 BR • Bonus or Den + 3 Full Bath & 2 Car Garage	2550	<b>SOLD</b>	<b>SOLD</b>
8	Cypress	5 BR • Bonus or Den + 3 Full Bath & 3 Car Garage	3006	<b>SOLD</b>	<b>SOLD</b>
9	Monterey	4 BR • Bonus or Den + 3 Full Bath & 2 Car Garage	2550	Complete	<b>\$409,950</b>

All prices subject to change without notice. Square footage is approximate.

Effective: 06/05/08



**Driving Directions:**

From HWY 167: Exit 84th Ave Exit and head South. 84th becomes N. Central Ave. Turn Left on James Street heading east up the hill. James becomes 240th Ave, continue east on 240th. The entrance to the community is a private drive on the north side of the road at 114th Ave SE. If you cross over 116th, you've gone too far east.



For more information, please contact our Listing Agent...

**Mark Barron**  
**(206) 550-1755**



Visit our website at [www.crescenthomes.com](http://www.crescenthomes.com)