
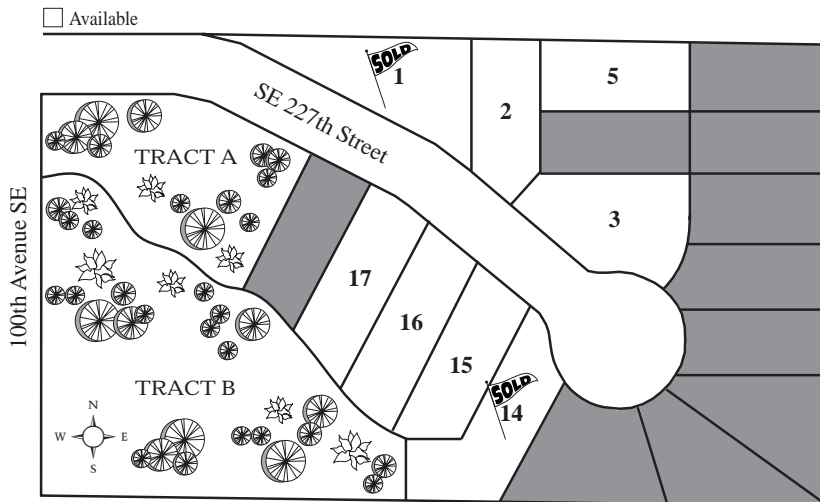


# Creekside

Presented By  Crescent Homes

LOT	MODEL	TYPE	FEATURES	SQ. FT.	STATUS	PRICE
1	Monterey	2 Story	4 BR + Bonus or Den • 3 Full Baths • 2 Car	2550	<b>SOLD</b>	<b>SOLD</b>
2	Cypress	2 Story	4 or 5 BR • Bonus or Den • 3 Full Baths • 2 Car	3006	Permit	TBD
3	Monterey	2 Story	4 BR + Bonus or Den • 3 Full Baths • 2 Car	2550	Permit	TBD
5	Cypress	2 Story	4 or 5 BR • Bonus or Den • 3 Full Baths • 2 Car	3006	Permit	TBD
14	Cypress	2 Story	4 or 5 BR • Bonus or Den • 3 Full Baths • 2 Car	3006	<b>SOLD</b>	<b>SOLD</b>
15	Monterey	2 Story	4 BR + Bonus or Den • 3 Full Baths • 2 Car	2550	Complete	\$409,950
16	Cypress	2 Story	4 or 5 BR • Bonus or Den • 3 Full Baths • 2 Car	3006	Complete	\$409,950
17	Avondale	3 Story	5 BR + Bonus & Loft • 3.5 Baths • 2 Car	3202	Permit	TBD

All prices subject to change without notice. Square footage is approximate. Effective: 7-10-08



## Featuring:

- Large Level Homesites
- Private Setting
- Fantastic Close-in Kent Location
- Elegant White Millwork Package
- Stainless Steel Appliances
- Extensive Hardwood Flooring

### DRIVING DIRECTIONS

*From HWY. 167/Valley Fwy: Take the 84th Avenue South/Central Avenue Exit. Drive south on 84th upon exiting, for approximately 3/4 of a mile. 84th Avenue South becomes Central Avenue North. Turn left on East James Street. Drive up the hill approximately 1.1 miles and turn left on 100th Avenue SE. (100th is immediately past the overhead footbridge). Drive North on 100th Avenue SE approximately 1 mile until you reach SE 227th Street and turn right into the neighborhood.*

Area 330 • Map 716 • C1

For More Information, Please Call:

Listing Agent ... **TOM TOLLEN** ... (206) 371-1999

 Windermere

Visit our website at [www.crescenthomes.com](http://www.crescenthomes.com)