

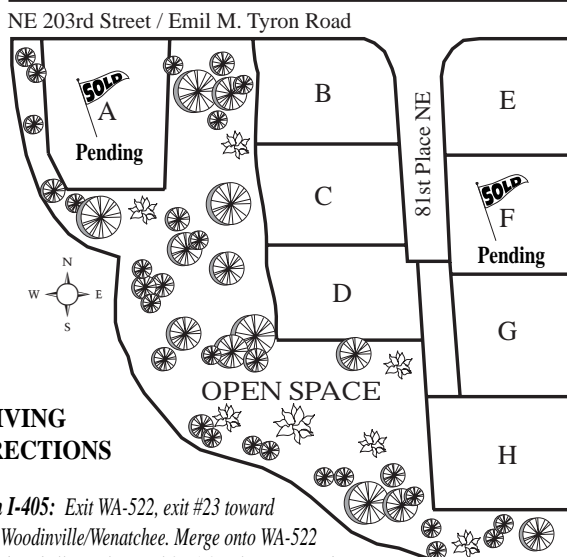


# Meridian

Presented By  Crescent Homes

LOT	MODEL	TYPE	FEATURES	SQ. FT.	STATUS	PRICE
A	Avondale	3 Story	5 BR + Bonus & Loft • 3.5 Baths Laundry on 2nd • 2 Car	3202	Permit	<b>SOLD Pending</b>
B	Berkeley	2 Story	4 BR + Bonus • 2.5 Baths • Living Formal Dining • 2 Car	2590	Permit	\$529,888
C	Avondale	3 Story	5 BR + Bonus & Loft • 3.5 Baths Laundry on 2nd • 2 Car	3202	June	\$569,888
D	Avondale	3 Story	5 BR + Bonus & Loft • 3.5 Baths Laundry on 2nd • 2 Car	3202	Permit	\$574,888
E	Berkeley	2 Story	4 BR + Bonus • 2.5 Baths • Living Formal Dining • 2 Car	2590	Permit	\$529,888
F	Raleigh	2 Story	4 BR + Bonus • 2.75 Baths • Formal Dining Laundry on 2nd • 2 Car	3295	MODEL	<b>SOLD Pending</b>
G	Raleigh	2 Story	4 BR + Bonus • 2.75 Baths • Formal Dining Laundry on 2nd • 2 Car	3295	Complete	\$564,888
H	Breckenridge	3 Story	4 BR + Family Room • Rec Room • Living 3.5 Baths • Front & Rear Decks • 2 Car	3427	June	\$599,888

All prices subject to change without notice. Square footage is approximate. Effective: 6-16-08



### DRIVING DIRECTIONS

**From I-405:** Exit WA-522, exit #23 toward US-2 Woodinville/Wenatchee. Merge onto WA-522 toward Bothell/Seattle travel for 3.2 miles. Turn Right onto 80th Ave NE and travel north for 1.3 miles. Turn Right at 203rd. Development will be on the right side of the road about 150 yards.

**From I-5:** Exit #175, head east on 145th for 1.5 miles. Turn left on Bothell Way NE/WA-523 and drive for 3.4 miles. Turn left on 83rd Ave NE. Continue up the hill and the road turns into 83rd Place NE. At the stop sign turn left onto 88th Ave NE and continue approximately 1.2 miles. Turn left onto NE 203rd St. Development will be in the left hand side about 250 yard.

### Featuring:

- Private Setting
- Close-in Location with Access to 405, Shopping & Lake Washington
- Homes with Great Entertaining Features
- Stainless Steel Appliances
- Extensive Hardwood Flooring
- Elegant White Painted Millwork
- High Tech Wiring Standard

For More Information, Please Call:

Listing Agent ... **Von Karl Inman** ... (206)719-8808

 Windermere

Area 610 • Map 476 • Grid B4

Visit our website at [www.crescenthomes.com](http://www.crescenthomes.com)