

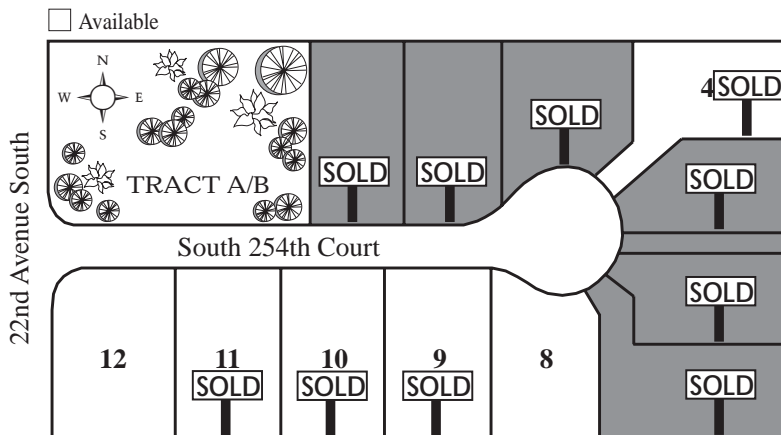


SUNSET Gardens

Presented By **Crescent Homes**

LOT	MODEL	TYPE	FEATURES	SQ. FT.	STATUS	PRICE
4	Cypress	2 Story	5 BR w/ Den + Bonus Room • 3 Full Baths • 2 Car	3006	SOLD	SOLD
8	Avondale	2 Story	4 BR • 2.5 Baths • 2 Car	2590	January '09	\$429,950
9	Cypress	2 Story	5 BR w/ Den + Bonus Room • 3 Full Baths • 3 Car	3006	SOLD	SOLD
10	Monterey	2 Story	5 BR w/ Den • 3 Full Baths • 3 Car	2550	SOLD	SOLD
11	Cypress	2 Story	5 BR w/ Den + Bonus Room • 3 Full Baths • 3 Car	3006	SOLD	SOLD
12	Monterey	2 Story	5 BR with Den • 2.5 Baths • 2 Car	2550	December	\$419,950

All prices subject to change without notice. Square footage is approximate. Effective: 9-5-08



Featuring:

- Large Level Homesites, some back to Greenbelt
- Many with Views of the Puget Sound!
- Quality Amenities and Great Floor Plans!
- Fantastic Location!
- Close to Freeways, Shopping and More!
- Private Cul-de-sac Setting!

DRIVING DIRECTIONS

From I-5 Southbound: Exit #149 the Kent/DesMoines exit. Turn right onto the Kent/DesMoines Road and merge into the far left lane. Take a sharp left onto Pacific Hwy. South/Hwy. 99. Turn right onto South 252nd Street, then left onto 22nd Avenue South. Turn left into the development at South 254th Court.
From I-5 Northbound: Exit #147, the South 272nd Street exit. Turn left onto South 272nd Street. Take a right onto Pacific Hwy. South/Hwy 99. Turn left on to South 252nd Street, then left onto 22nd Avenue South. Turn left into the development at South 254th Court.

Area 120 • Map 715 • C3

For More Information, Please Call:

Listing Agent ... **MARK BARRON** ... (206) 550-1755
RICK JUMA ... (206) 919-5862

Windermere

Visit our website at www.crescenthomes.com